

## The instruction of ZEROMUR door assembly in the door casing.

1. The first step is to remove the assembly caps from the installed door casing



2. Install the hinges in accordance with their markings – the right one to the right door casing and the left one to the left door casing; make sure that adjusting screw in the hinge is directed to the top and the down arm of the hinge is located from the side of the door casing. There are screws adjusting hinges to the door in the hinge packaging.



3. Fix the seal in the door casing; it must be located with the convex part in the direction of the door wing.



4. Install the fastening sheet of the lock in the door casing.



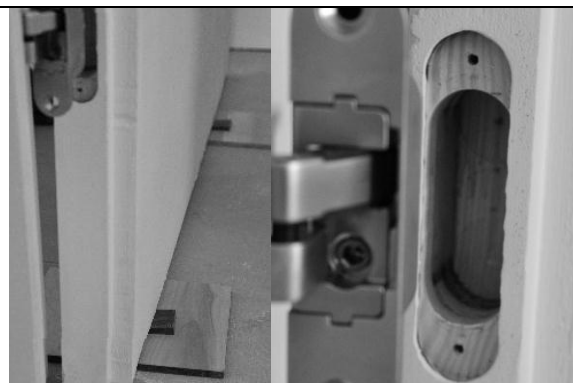
5. Prepare the wing to the assembly – drill the holes for the hinge and lock screws, fix the lock in the wing.



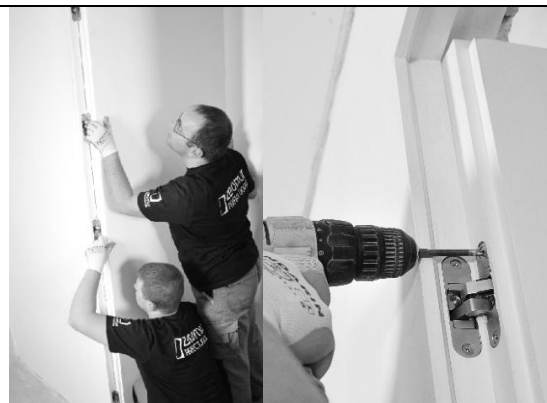
6. Put all the hinges in one line (in a partly open position).



7. Pre-put the door wing in a way which easier its assembly. Put the washers under the door which will enable its moving. Match the height of the washers which will enable you to slide the wing in the hinge – the hole in the wing must be on the height of the hinges.



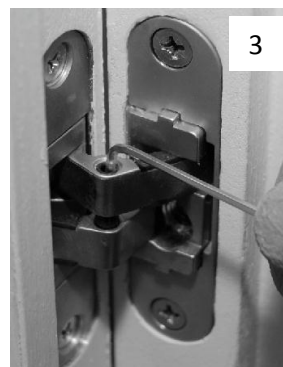
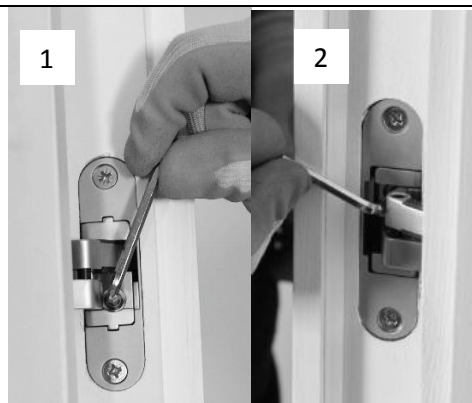
8. Slide the wing in the hinge, put the wing adjusting screws in the hinges, delicately and slowly close the wing and check if it is in the correct position in relation to the door casing.



9. If it is necessary, regulate the position of the wing using all the hinges together with the hexagonal key and the fastening sheet of the lock. The hexagonal keys are attached with the hinges. The regulation of the hinges is as follows:

- the screw in the hinge from the door casing side is used for the pressing of the wing to the door casing (photo 1),
- the screw in the hinge from the wing side is used for moving the wing on sides – either the hinge one or the lock one (photo 2),
- the screw in the hinge axis is used for lifting the wing (photo 3).

Adjust till the gaps on sides and on the top of the wing are equal.



10. Check the position of the wing after adjustment. The gap between the side and the top edge of the door casing and the door wing should be of about 3mm.

